



Country profile:

# Afghanistan

## LDC status



Inclusion: 1971

## Reports and resolutions



Inclusion

CDP report: 1971  
GA resolution: A/RES/2768(XXVI)

## Key figures\*

\* Data from the 2024 triennial review

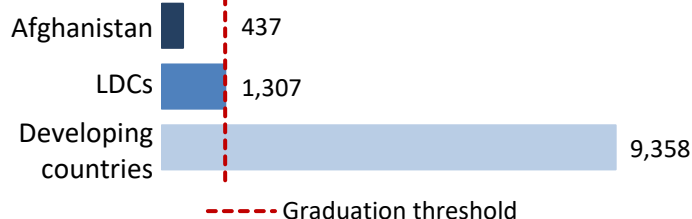
### Gross national income (GNI) per capita\*



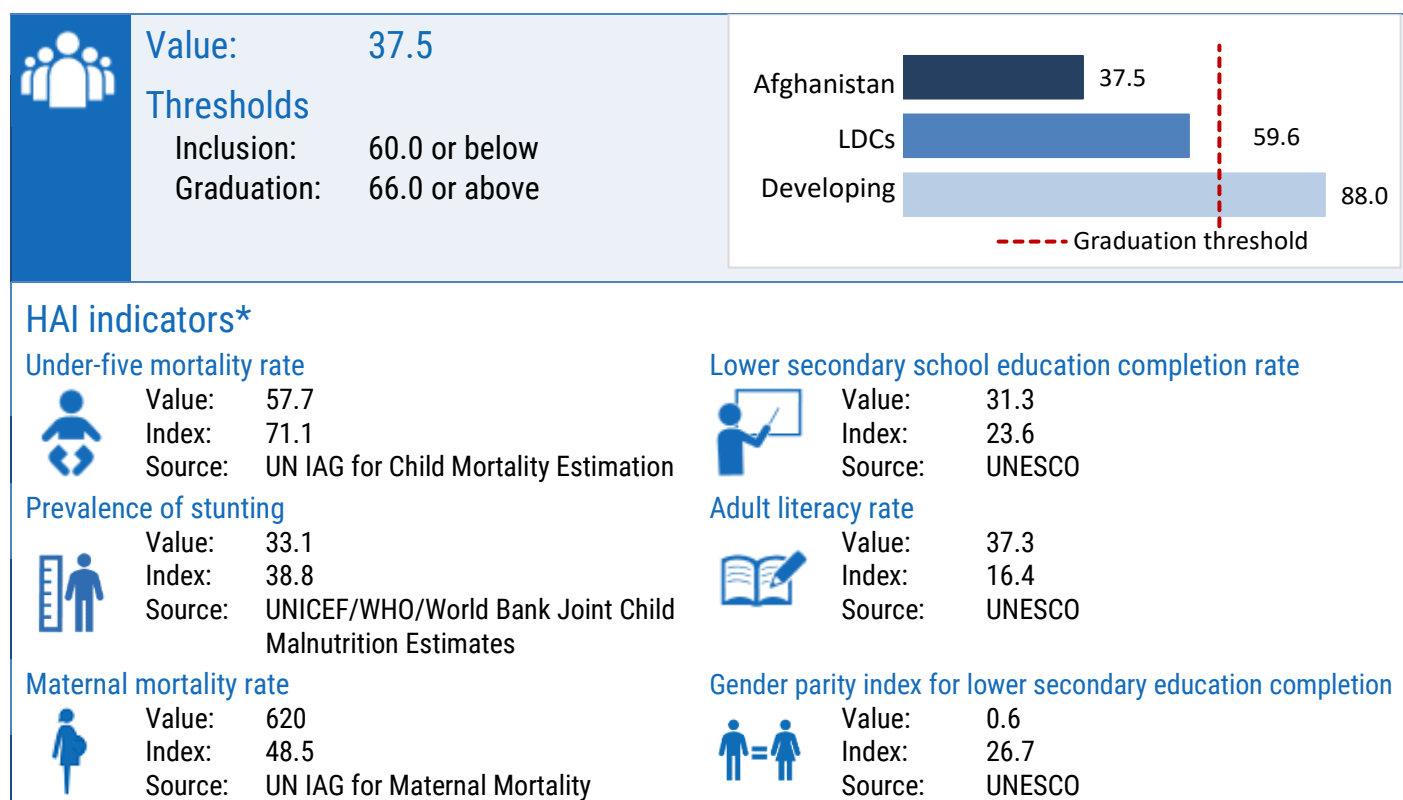
Value: \$437

Thresholds

Inclusion: \$1,088 or below  
Graduation: \$1,306 or above



## Human assets index (HAI)\*



## Economic and environmental vulnerability index (EVI)\*

