



Country profile:

Bhutan

LDC status



Inclusion: 1971

Graduation: 13 December 2023

Reports and resolutions



Inclusion

CDP reports: 1971
GA resolution: A/RES/2768(XXVI)

Graduation

CDP reports: 2015, 2018
ECOSOC resolution: E/RES/2018/27
GA resolution: A/RES/73/133, A/RES/78/125
Impact assessment: 2018
Vulnerability profile: 2018
Country presentation: 2018 CDP EGM presentation
Country statement: 2018 CDP Plenary statement
Monitoring reports: 2020, 2021, 2022, 2023, 2024

Key figures*

* Data from the 2024 triennial review

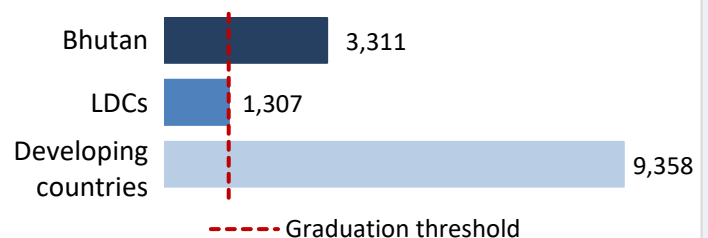
Gross national income (GNI) per capita*



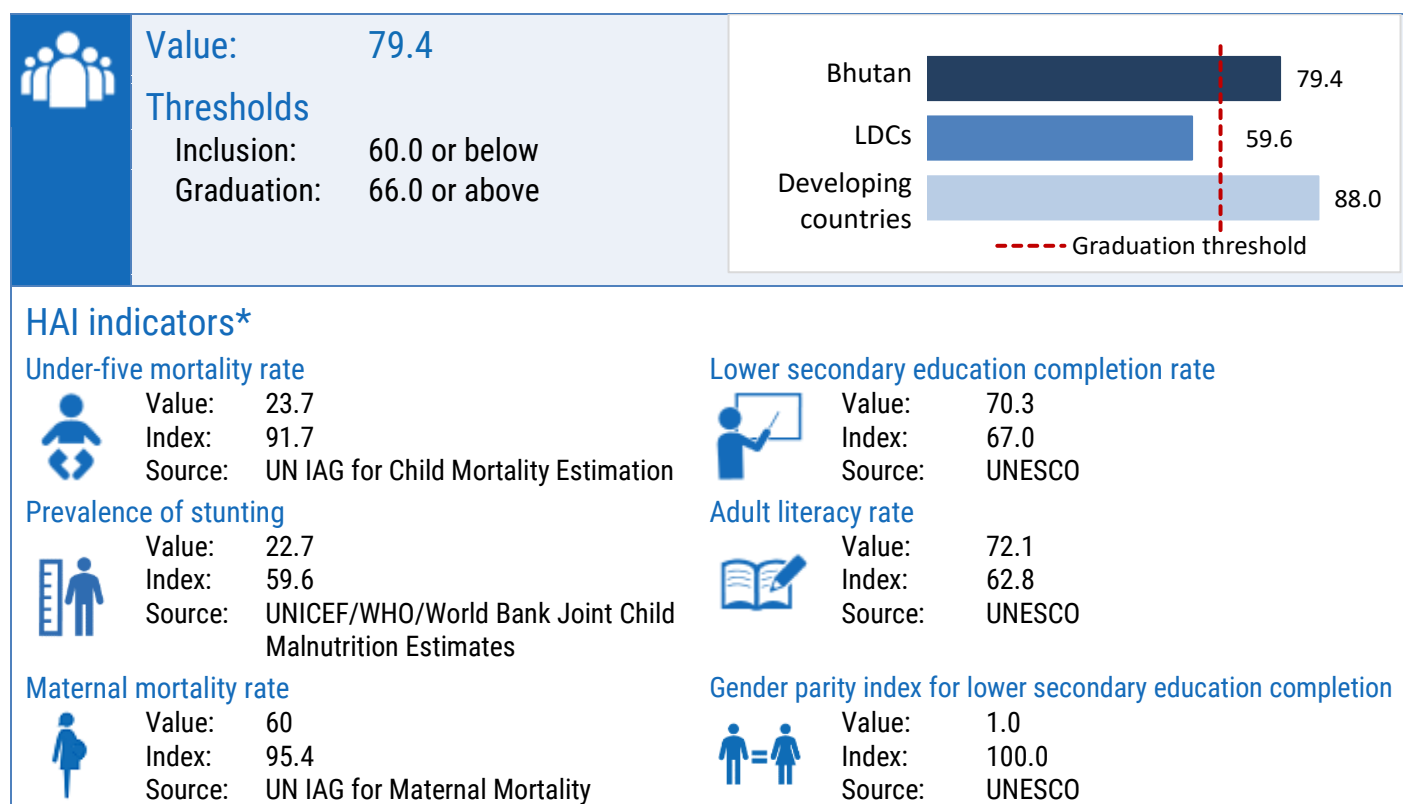
Value: \$3,311

Thresholds

Inclusion: \$1,088 or below
Graduation: \$1,306 or above



Human assets index (HAI)*



Economic and environmental vulnerability index (EVI)*

