



Country profile:

Comoros

LDC status



Inclusion: 1977

Graduation: Met the criteria two consecutive times, but CDP decision deferred to 2027

Reports and resolutions



Inclusion

CDP report: 1977

GA resolutions: A/RES/31/42, A/RES/32/92

Graduation

CDP report: 2021, 2024

Vulnerability profile: 2024

Country statement: 2024 CDP EGM statement-English, 2024 CDP EGM statement-French

Key figures*

* Data from the 2024 triennial review

Gross national income (GNI) per capita*

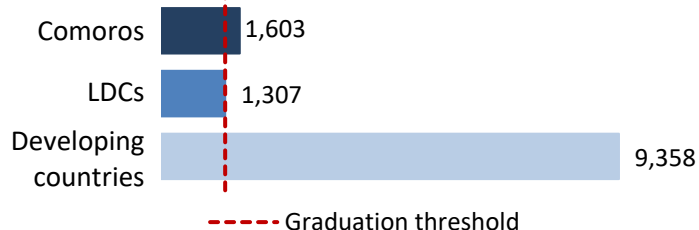


Value \$1,603

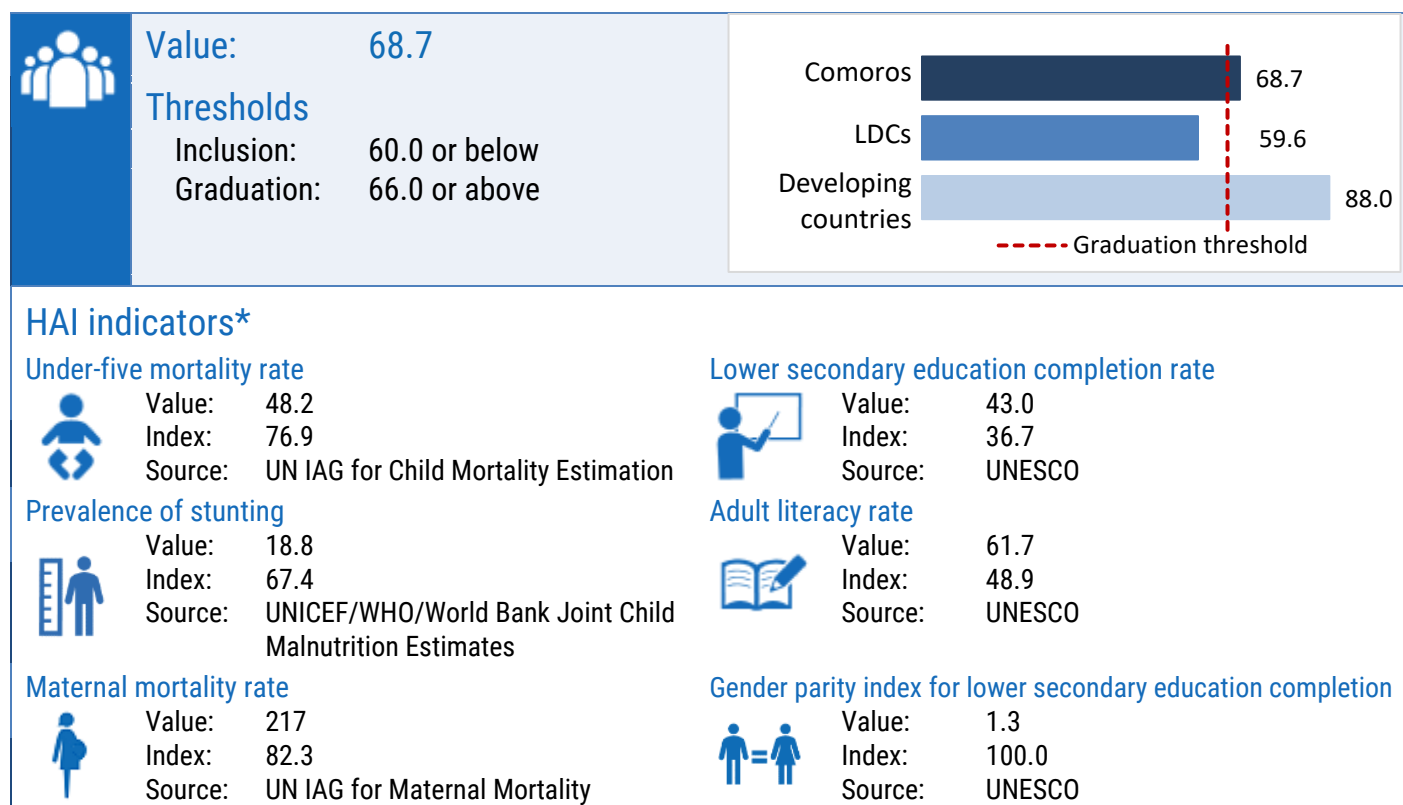
Thresholds:

Inclusion: \$1,088 or below

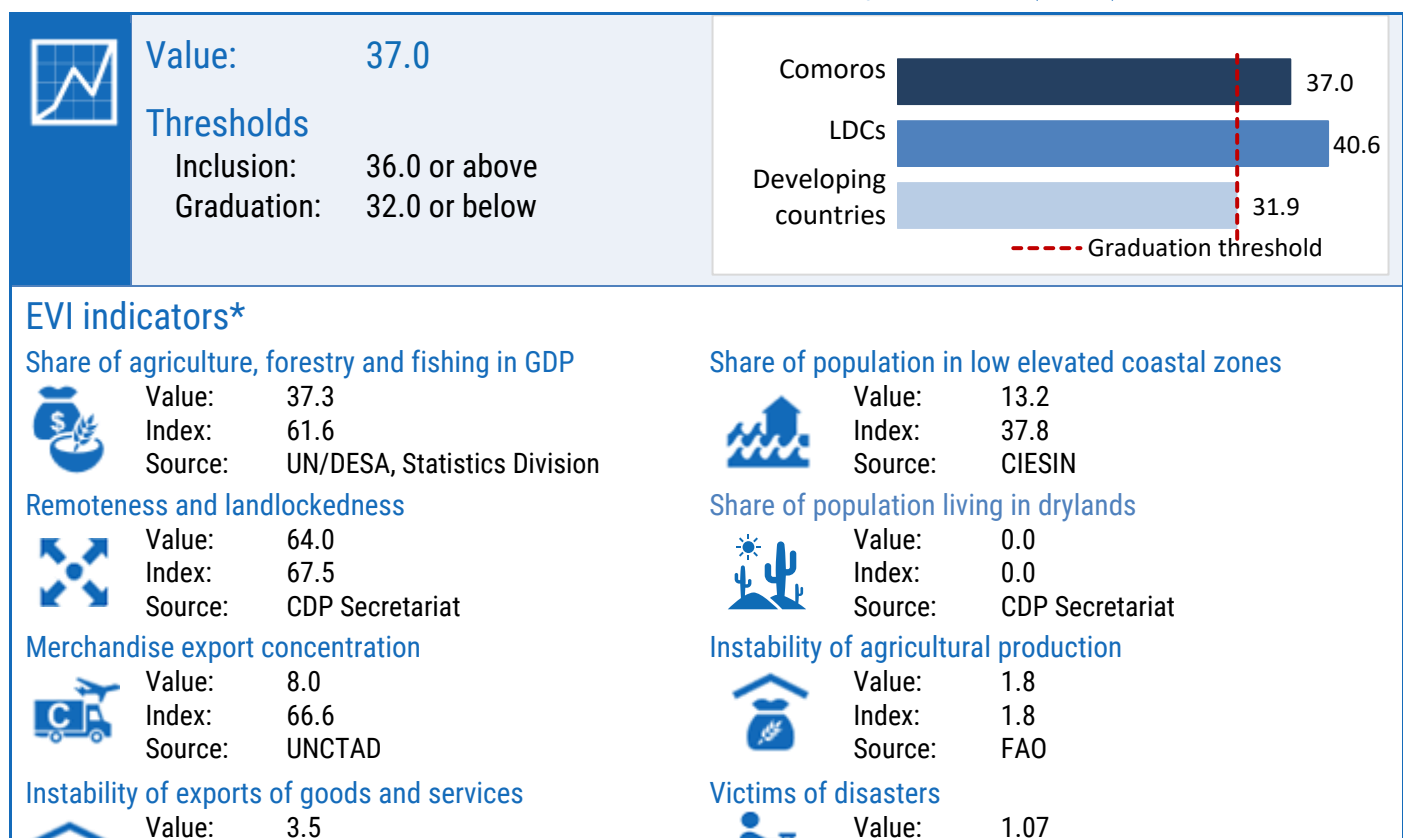
Graduation: \$1,306 or above



Human assets index (HAI)*



Economic and environmental vulnerability index (EVI)*



Index: 7.0
Source: UN/DESA, Statistics Division

Index: 53.6
Source: UNDRR