



Country profile:

Nepal

LDC status



Inclusion: 1971

Graduation: Scheduled to graduate on 24 November 2026

Reports and resolutions



Inclusion

CDP reports: 1971
GA resolution: A/RES/2768(XXVI)

Graduation

CDP reports: 2015, 2018, 2021
ECOSC report: E/RES/2021/11
GA resolution: A/RES/76/8
Impact assessment: 2018
Vulnerability profile: 2018
Country presentation: 2018 CDP EGM, 2021 CDP EGM
Country statement: 2018 CDP EGM, 2018 CDP Plenary, 2021 CDP Plenary
Monitoring reports: 2022, 2023, 2024

Key figures*

* Data from the 2024 triennial review

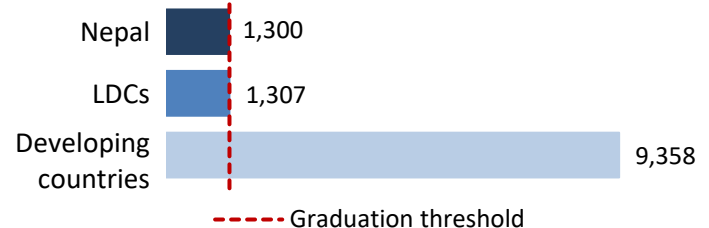
Gross national income (GNI) per capita*



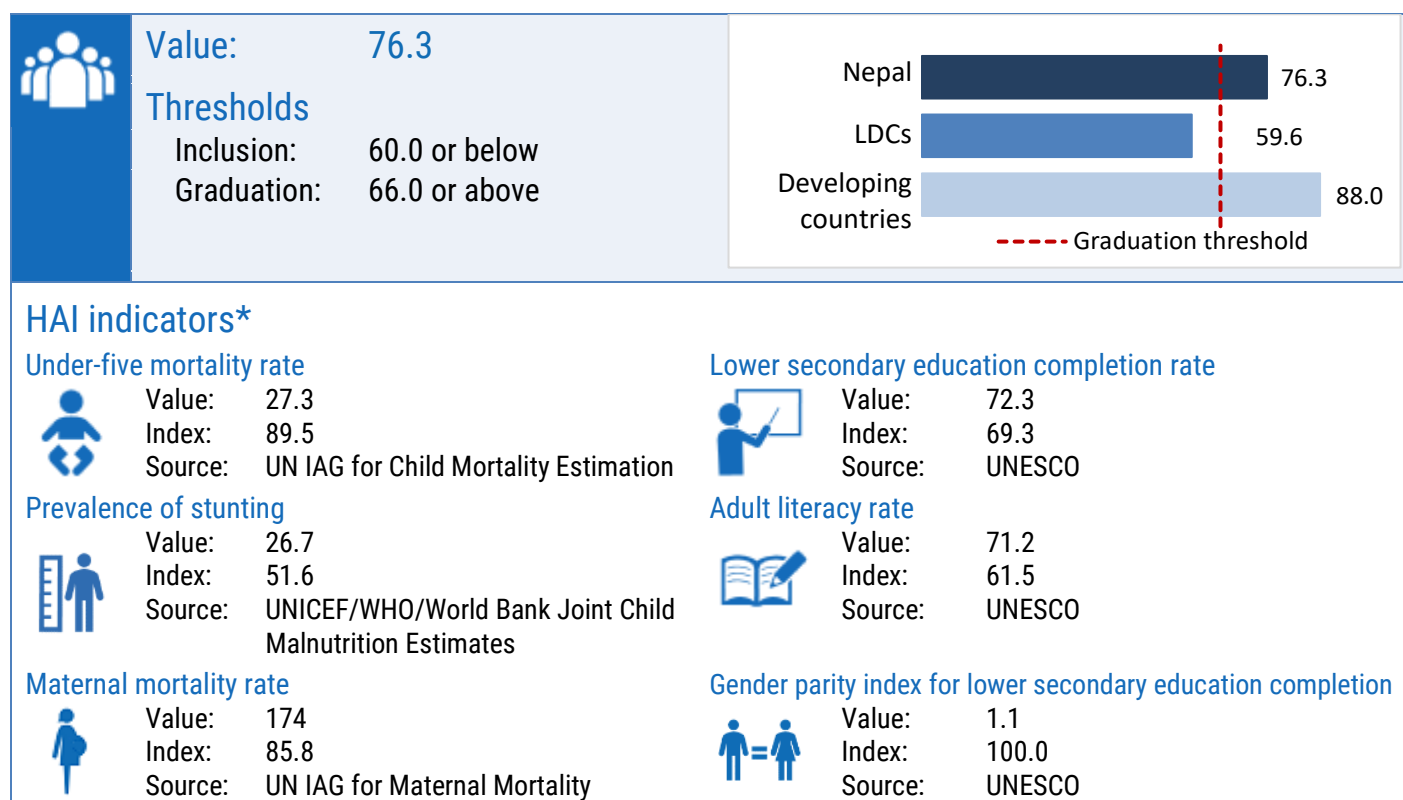
Value \$1,300

Thresholds:

Inclusion: \$1,088 or below
Graduation: \$1,306 or above



Human assets index (HAI)*



Economic and environmental vulnerability index (EVI)*

