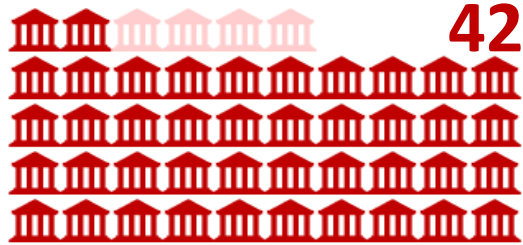


COVID-19 government responses in LDCs – status report of 30 Sep 2022

For how many of the 46 LDCs have measures been recorded?



Stringency index

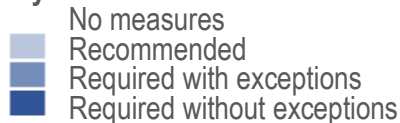
The Stringency index is calculated using nine indicators, combining various measures of government responses, to capture a variation in containment and closure policies only. It records the number and strictness of government policies, not the appropriateness or effectiveness of a country's response.

Legend:

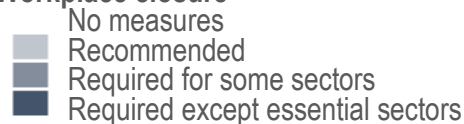
Stringency Index



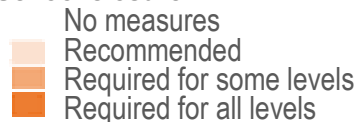
Stay at home order



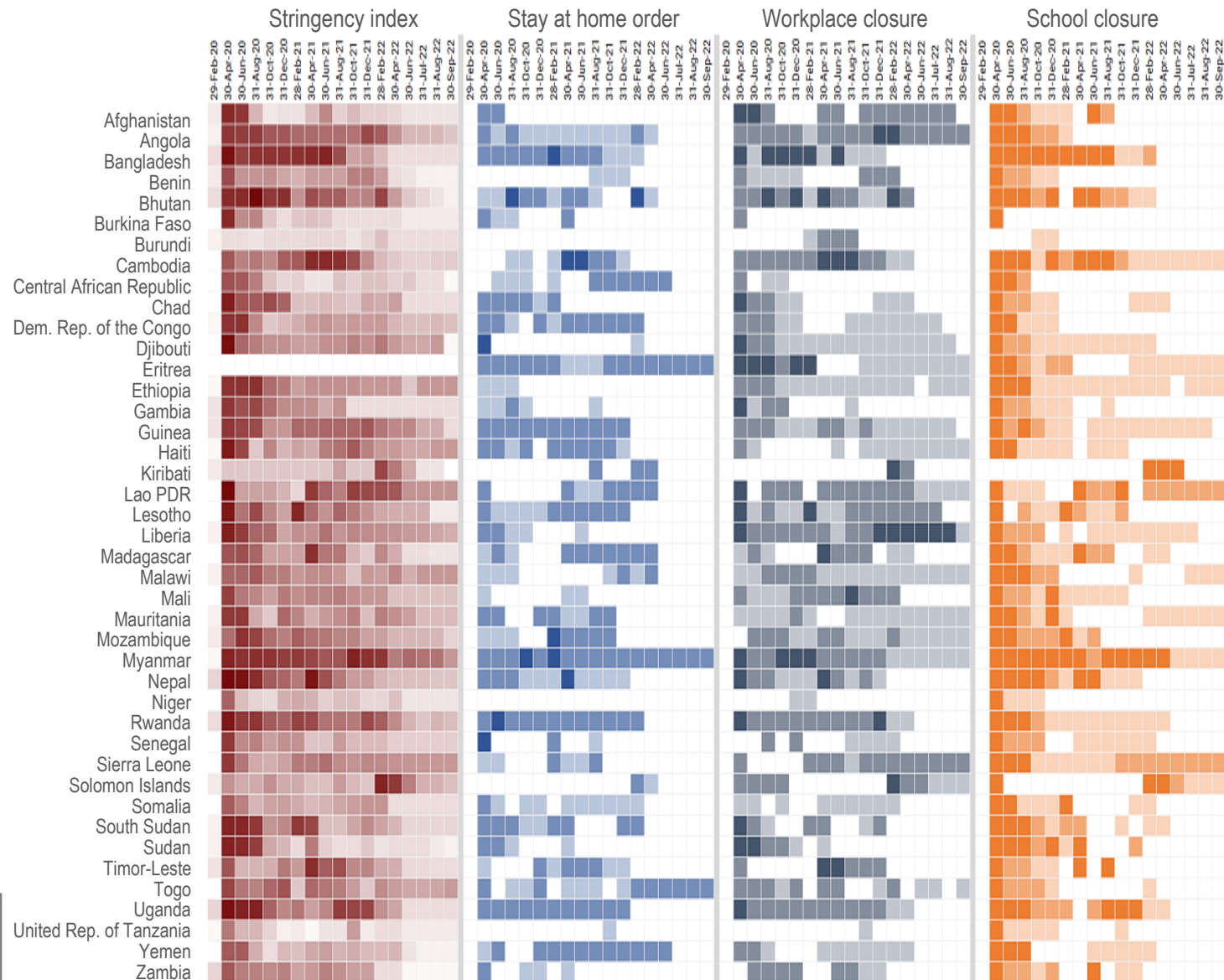
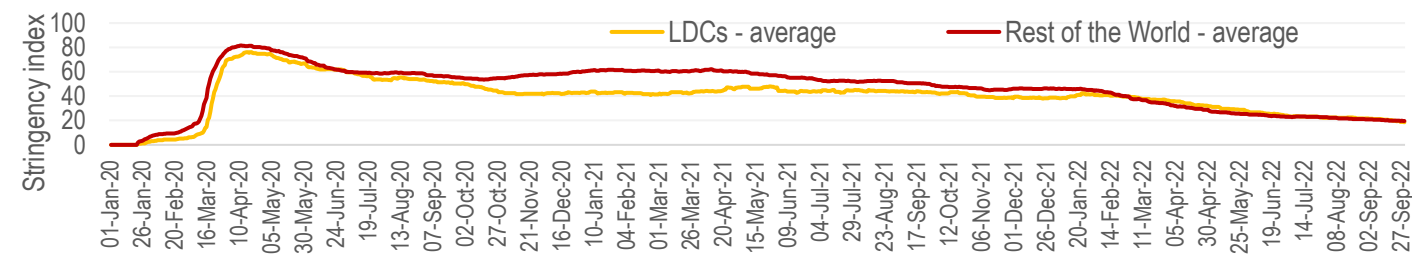
Workplace closure



School closure



Timing of recorded policy responses by governments in LDCs



Source: CDP Secretariat, calculated based on data from Oxford COVID-19 Government Response Tracker (<https://covidtracker.bsg.ox.ac.uk/>)