



Country profile:

Equatorial Guinea

LDC status



Inclusion: 1982

Graduation: 2017

Reports and resolutions



Inclusion

CDP reports: 1981, 1982
ECOSOC resolutions: E/DEC/1980/161, E/DEC/1982/106, E/RES/1982/41
GA resolutions: A/RES/35/106, A/RES/49/133

Graduation

CDP reports: 2009, 2010, 2011, 2012, 2014, 2015, 2016, 2017, 2018
ECOSOC resolutions: E/2009/35, E/2011/20, E/2012/32
GA resolution: A/RES/68/18
Impact assessment: 2009
Vulnerability profile: 2009
Country statement: 2009 CDP EGM, 2009 CDP Plenary – English, 2009 CDP Plenary - Spanish
Monitoring reports: 2017, 2018, 2019, 2020, 2021, 2024

Key figures*

* Data from the 2024 triennial review

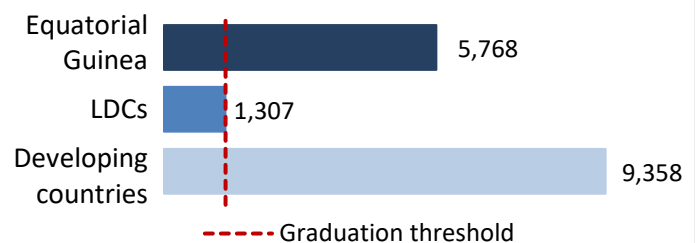
Gross national income (GNI) per capita*



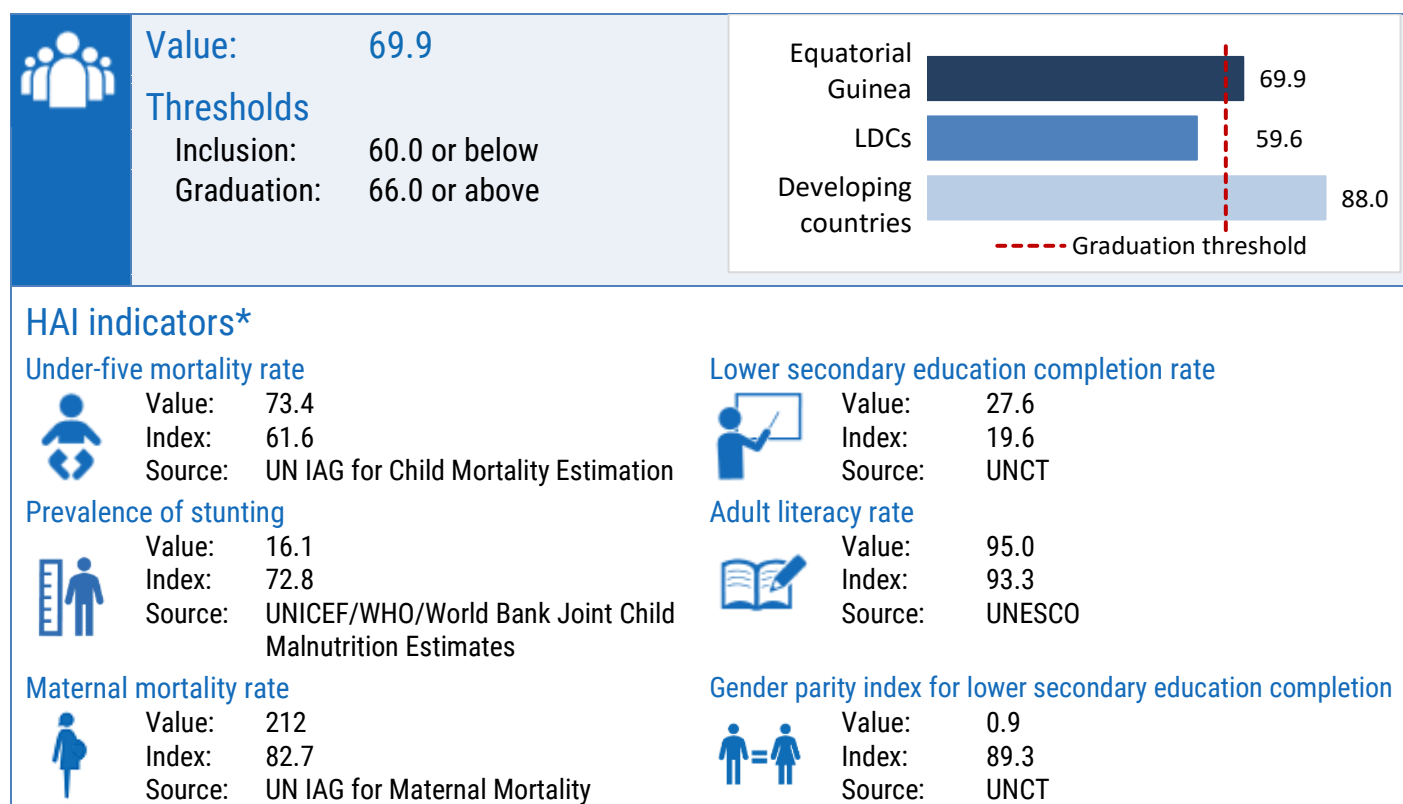
Value: \$5,768

Thresholds

Inclusion: \$1,088 or below
Graduation: \$1,306 or above



Human assets index (HAI)*



Economic and environmental vulnerability index (EVI)*

