



Country profile:

Myanmar

LDC status



Inclusion: 1987

Graduation: Met the criteria two consecutive times, but deferred by CDP

Reports and resolutions



Inclusion

CDP reports: 1987
ECOSOC resolution: E/1987/163
GA resolution: A/DEC/42/428

Graduation

CDP reports: 1997, 2018, 2021

Graduation assessment: 2021
Impact assessment: 2021
Vulnerability profile: 2021

Country presentation: 2021 CDP EGM presentation
Country statement: 2021 CDP Plenary statement

Key figures*

** Data from the 2021 triennial review*

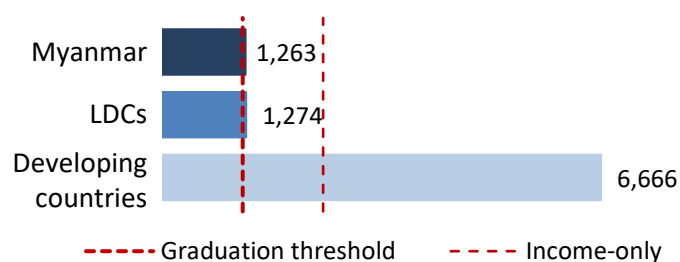
Gross national income (GNI) per capita*



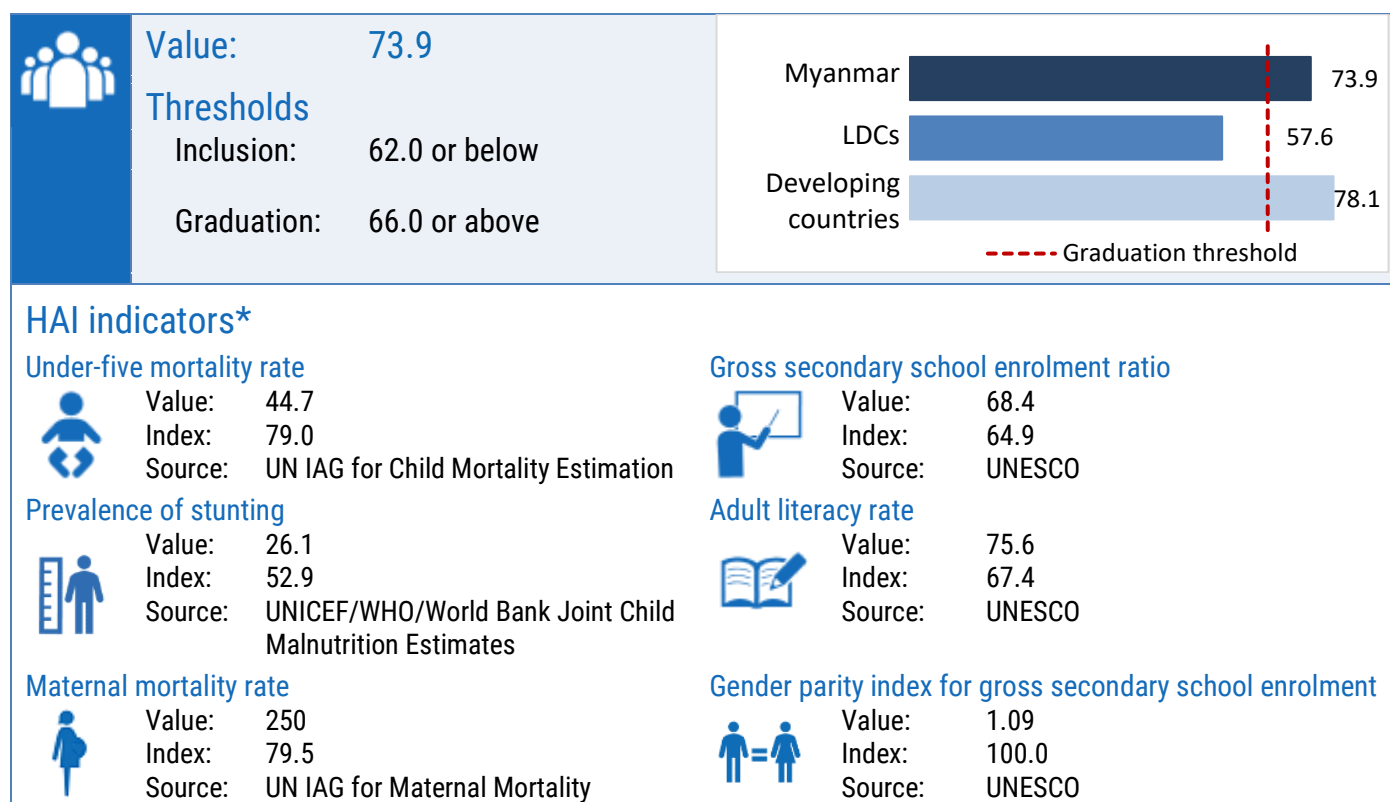
Value \$1,263

Thresholds:

Inclusion \$1,018 or below
Graduation \$1,222 or above
Income-only \$2,444 or above



Human assets index (HAI)*



Economic and environmental vulnerability index (EVI)*

