



Country profile:

Nepal

LDC status



Inclusion: 1971

Graduation: Scheduled to graduate in 2026

Reports and resolutions



Inclusion

CDP reports: 1971
GA resolution: A/RES/2768(XXVI)

Graduation

CDP reports: 2015, 2018, 2021
ECOSC report: E/RES/2021/11
GA resolution: A/76/L.6/Rev.1
Impact assessment: 2018
Vulnerability profile: 2018
Country presentation: 2018 CDP EGM, 2021 CDP EGM
Country statement: 2018 CDP EGM, 2018 CDP Plenary, 2021 CDP Plenary

Key figures*

* Data from the 2021 triennial review

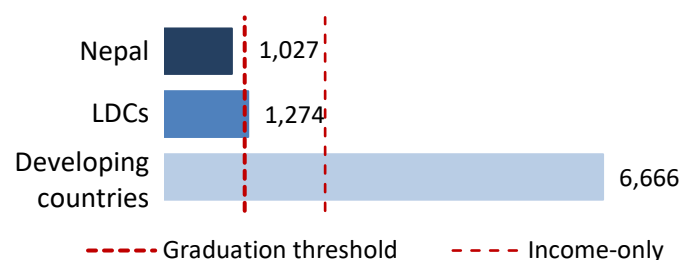
Gross national income (GNI) per capita*



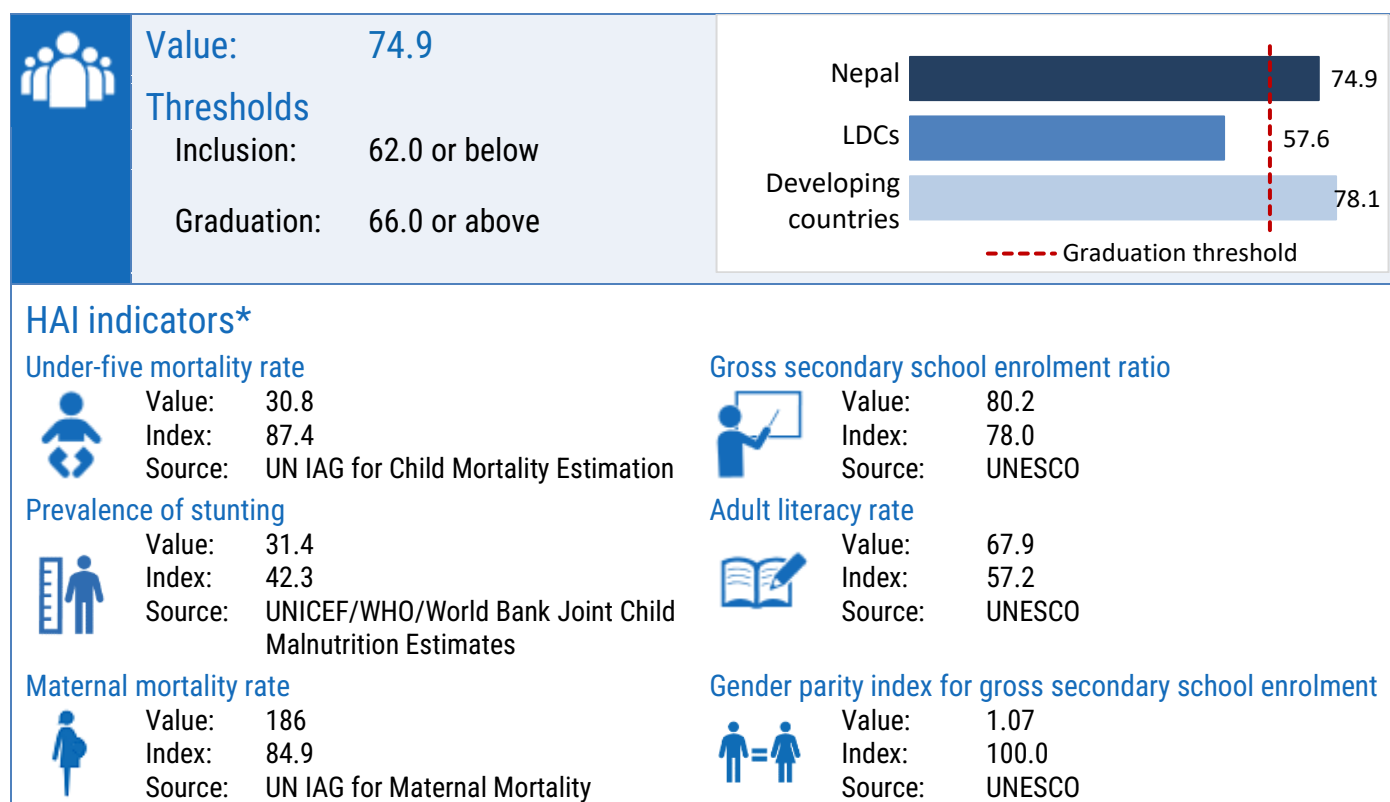
Value \$1,027

Thresholds:

Inclusion \$1,018 or below
Graduation \$1,222 or above
Income-only \$2,444 or above



Human assets index (HAI)*



Economic and environmental vulnerability index (EVI)*

