



Country profile:

# Samoa

## LDC status



Inclusion: 1971

Graduation: 2014

## Reports and resolutions



### Inclusion

CDP reports: 1971  
GA resolution: A/RES/2768(XXVI)

### Graduation

CDP reports: 1991, 1997, 2000, 2003, 2006, 2009, 2010, 2011, 2012, 2013, 2014, 2015, 2016, 2017, 2018, 2021  
ECOSOC resolutions: E/RES/1997/223, E/2006/266, E/2007/212, E/RES/2007/35  
GA resolutions: A/RES/62/97, A/RES/64/295  
Vulnerability profile: 2006  
Monitoring reports: 2009, 2010, 2011, 2012, 2013, 2014, 2015, 2016, 2017, 2018, 2021  
Country report: 2014, 2015, 2016, 2017, 2018

## Key figures\*

\* Data from the 2024 triennial review

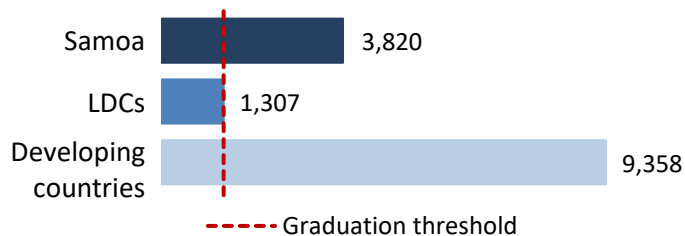
### Gross national income (GNI) per capita\*



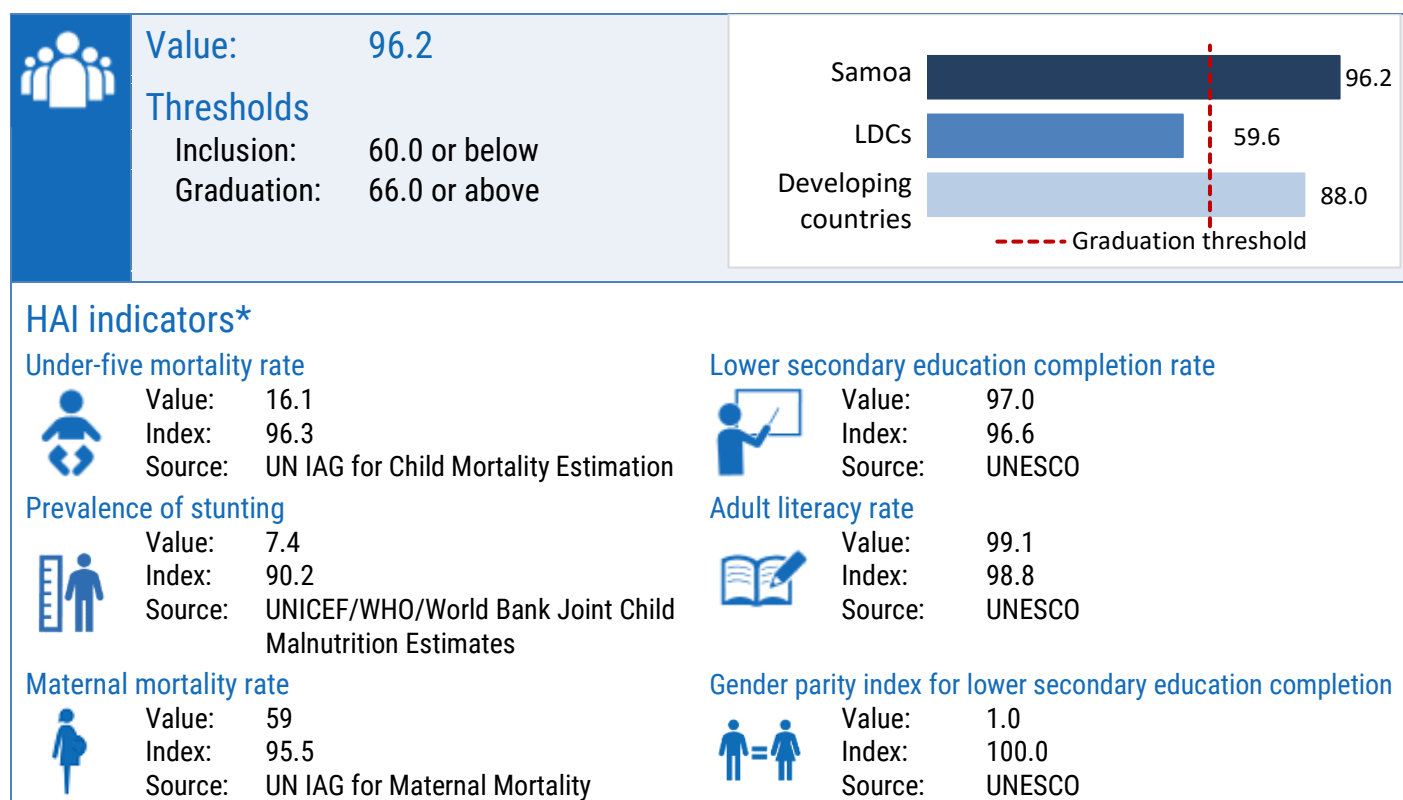
Value: \$3,820

#### Thresholds

Inclusion: \$1,088 or below  
Graduation: \$1,306 or above



## Human assets index (HAI)\*



## Economic and environmental vulnerability index (EVI)\*

