



Country profile:

Bangladesh

LDC status



Inclusion: 1975

Graduation: Scheduled to graduate in 2026

Reports and resolutions



Inclusion

CDP reports: 1975
ECOSOC resolution: E/1976(LIX)
GA resolution: A/RES/3487(XXX)

Graduation

CDP reports: 2018, 2021
ECOSOC resolution: E/RES/2021/11
GA resolution: A/76/L.6/Rev.1
Impact assessment: 2021
Vulnerability profile: 2021
Country presentation: 2021 CDP EGM presentation
Country statement: 2021 CDP Plenary statement

Key figures*

* Data from the 2021 triennial review

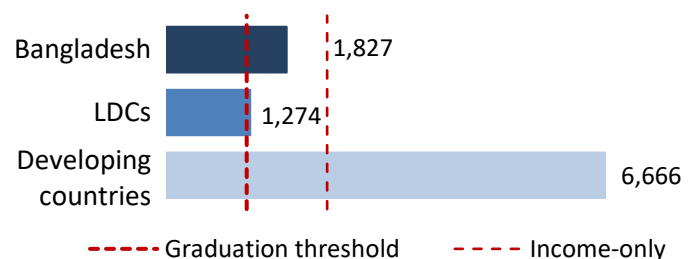
Gross national income (GNI) per capita*



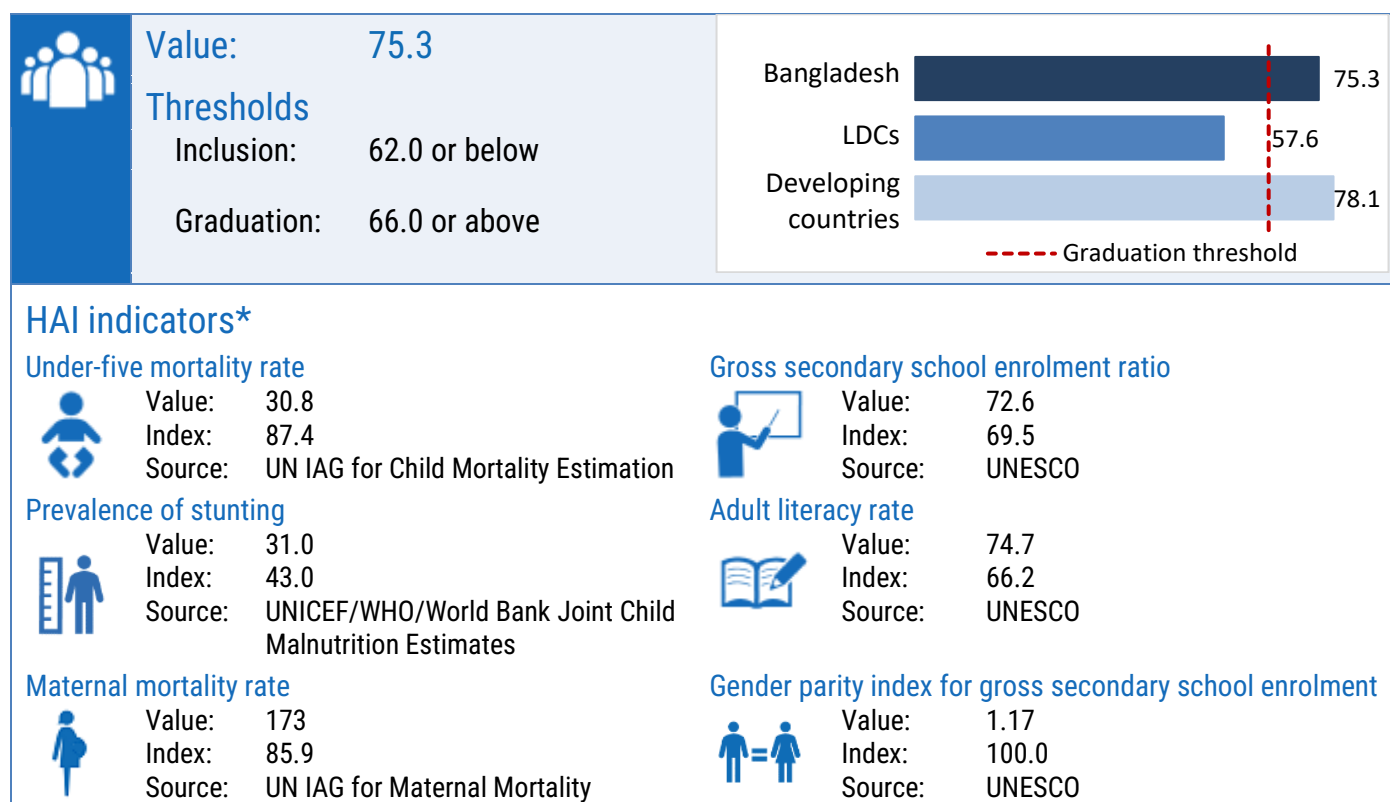
Value \$1,827

Thresholds:

Inclusion \$1,018 or below
Graduation \$1,222 or above
Income-only: \$2,444 or above



Human assets index (HAI)*



Economic and environmental vulnerability index (EVI)*

